



MKS-L DIES CONSTRUCTION SHEET

JST

Terminal/Contact Model No.	SZH-002T-P0.5	Die set Model No.	SZH-002-05
		Applicator Model No.	MKS-L
		Crimp shape (wire)	N-1.0
		Crimp shape (ins)	N-1.0

Clearance between Crimper (B) and Shear blade 0.05

Description	No.	Description	No.
Crimper (A)	63406	Crimper anvil (A)	75685
Crimper (B)	64006	Crimper anvil (B)	
Spacer (A)	65120		
Spacer (B)			
Spacer (C)			
Punch	68225	Spacer	77740
Die holder	67800	Shear blade	74690
Spring		Shear blade supporter	73121
Wire block	390	Shear blade base	78010
Insulation block	330	Shear blade spring	87010
Wire hold punch	68235	"	
Wire hold punch spring	87270	Feed finger	86180
		Feed finger holder	86040
Guide plate (L)	81880	Stripper	91770
Guide plate (R)	82035	Stripper bracket	92320
Feed plate	84660	Stripper pin	
Pressure plate	83170		
Pressure spring(2pcs)	87001	Scrap cover	95310

Wire and Crimp height				Remarks
Wire		Crimp height (mm)		
Type	Size	Wire	Ins	
UL1571	#28	0.50~0.55	1.2	
UL1571	#26	0.55~0.60	1.2	

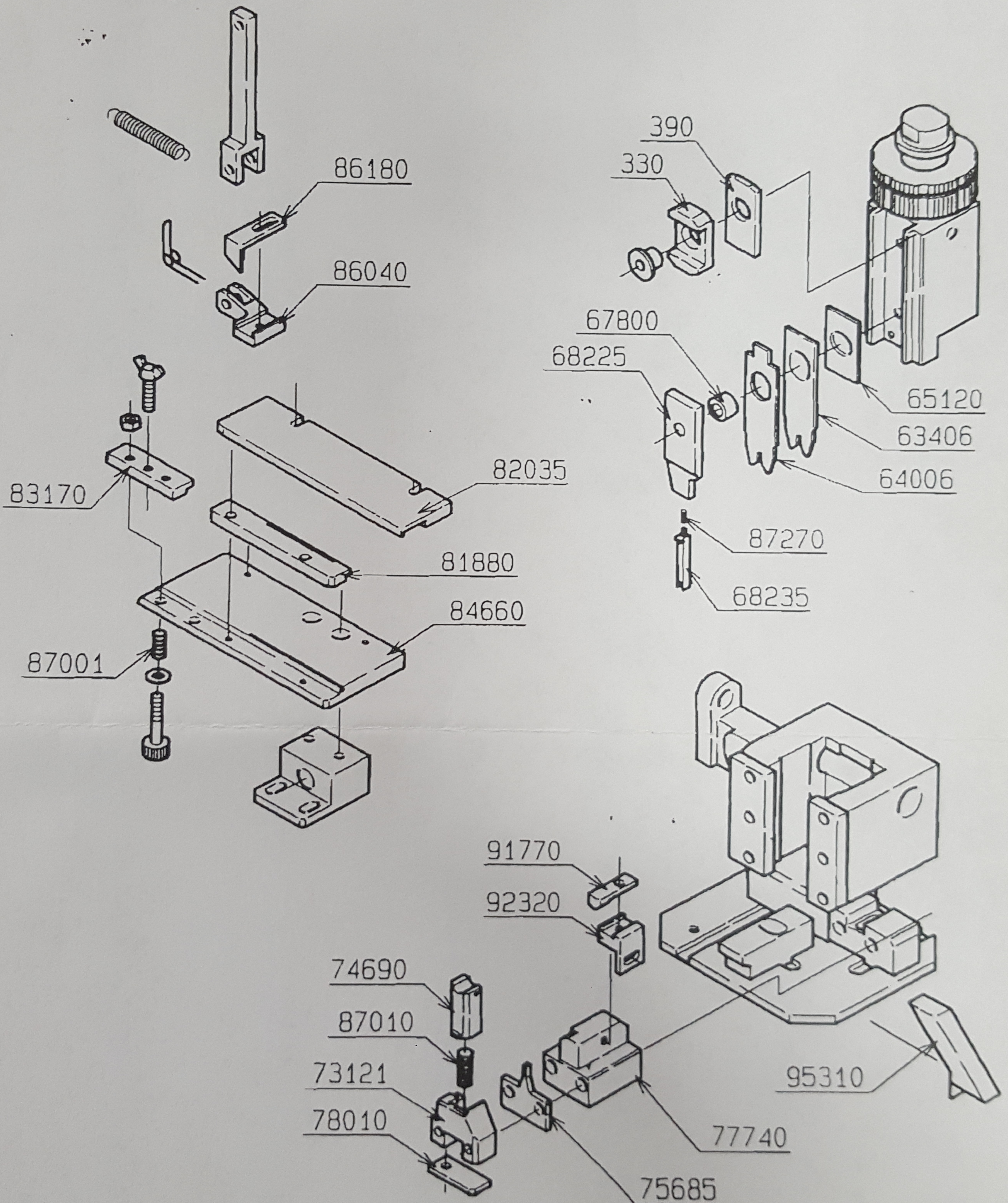
Prepared by	<i>H. Fujii</i>	Issue date	Apr 15, 1996
Checked by	>	No.	CP-MS105

JST

Side-Feeding Applicator
MKS-L
Die Set Assembly

Applicable
terminal/
contact

SZH-002-05



Date	Drawn by
Jun. 21. '95	R. Fager

(CP-MS195)