



MKS-L DIES CONSTRUCTION SHEET

JST

Terminal/Contact Model No.	SYM-001T-(P)0.6	Die set Model No.	SYM-001-06
		Applicator Model No.	MKS-L, MKS-LS
		Crimp shape (wire)	N-1.5
		Crimp shape (ins)	N-1.8

Clearance between Crimper (B) and Shear blade 0.1

Description		No.	Description		No.
Crimper (A)		63510	Crimper anvil (A)		75580
Crimper (B)		64381	Crimper anvil (B)		76520
Spacer (A)		65070			
Spacer (B)					
Spacer (C)		65011			
Punch		68270	Spacer		77160
Die holder		67350	Shear blade		74240
Spring		87100	Shear blade supporter		73030
Wire block		387	Shear blade base		78010
Insulation block		324	Shear blade spring		87010
Punch holder		68150			
Hold punch		68140	Feed finger		86180
Punch spring		87110	Feed finger holder		86170
Guide plate (L)		81270	Stripper		91220
Guide plate (R)		82360	Stripper bracket		92180
Feed plate		84221	Stripper pin		02100
Pressure plate		83061			
Pressure spring(2pcs)		87001	Scrap cover		95151

Wire and Crimp height				Remarks
Wire		Crimp height (mm)		
Type	Size	Wire	Ins	
UL1007	#28	0.75~0.80	1.6	
UL1007	#26	0.85±0.05	1.7	
UL1007	#24	0.90±0.05	1.8	
UL1007	#22	0.95±0.05	1.9	

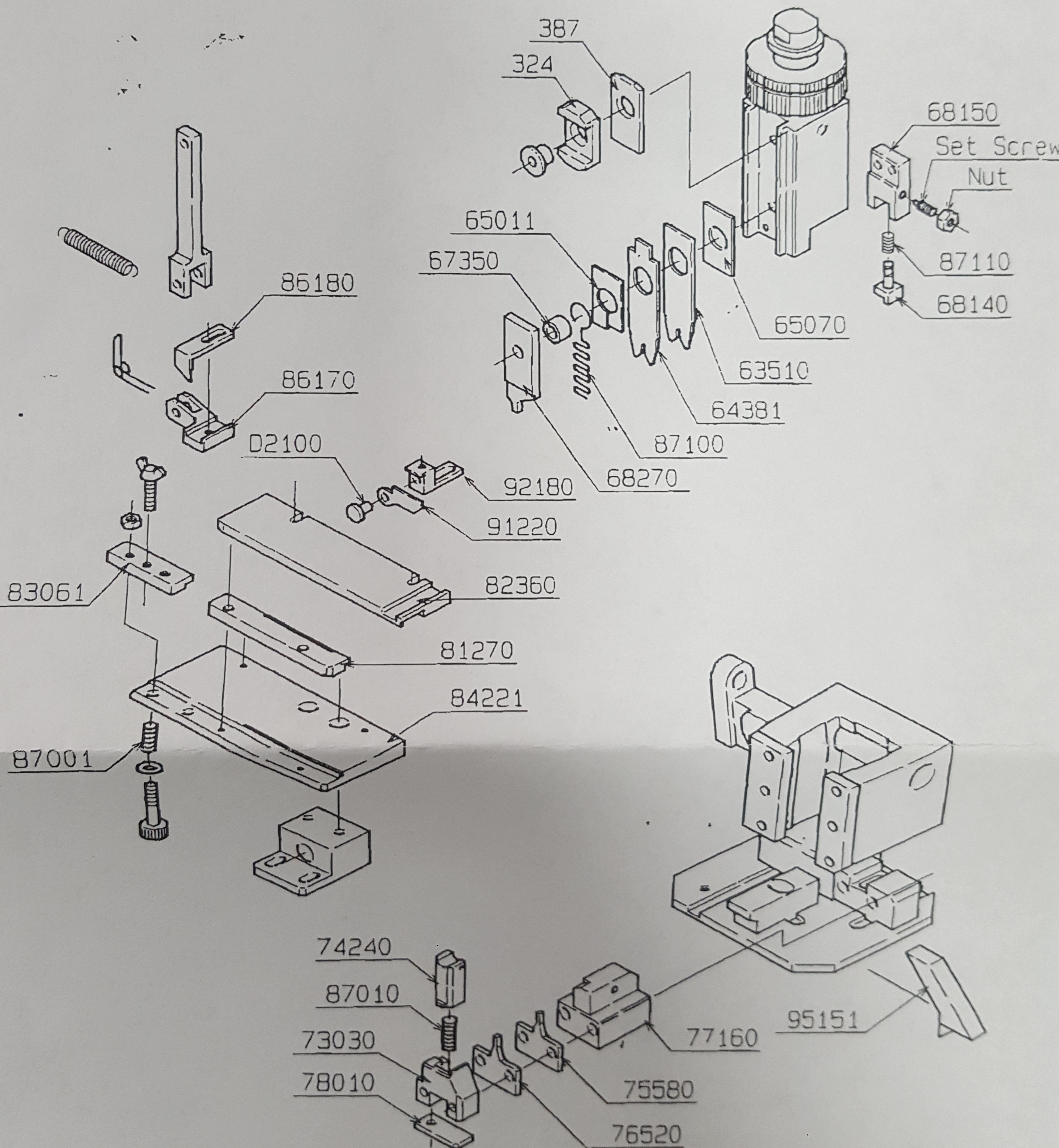
Prepared by A. Fujii Issue date Apr 16, 1996

JST

Side-Feeding Applicator
MKS-L
Die Set Assembly

Applicable
terminal/
contact

SYM-001-06



Date	Drawn by
------	----------

Aug 11, 1993

(CP-MS187)