



MKS-L DIES CONSTRUCTION SHEET

JST

Terminal/Contact Model No.	SPHD-002T-P0.5	Die set Model No.	SPHD-002-05
		Applicator Model No.	MKS-L-10
		Crimp shape (wire)	N-1.4
		Crimp shape (ins)	N-1.4

Clearance between Crimper (B) and Shear blade 0.1

Description	No.	Description	No.
Crimper (A)	63821	Crimper anvil (A)	75780
Crimper (B)	64671	Crimper anvil (B)	76345
Spacer (A)	65120		
Spacer (B)			
Spacer (C)	65011		
Punch	68270	Spacer	77400
Die holder	67360	Shear blade	74690
Spring	87100	Shear blade supporter	73120
Wire block	386	Shear blade base	78010
Insulation block	324	Shear blade spring	87010
		Feed finger	86180
		Feed finger holder	86040
Wire disk	88330		
Guide plate (L)	81510	Stripper	91450
Guide plate (R)	82500	Stripper bracket	92300
Feed plate	84310	Stripper pin	
Pressure plate	83170		
Pressure spring(2pcs)	87001	Scrap cover	95310
Insulation disk	88320		

Wire and Crimp height				Remarks Dies constructin is the same as that for SPHD-001-05, though crimp heights are different.
Wire		Crimp height (mm)		
Type	Size	Wire	Ins	
UL1007	#28	0.55~0.60	1.6	
UL1007	#26	0.60~0.65	1.7	
UL1007	#24	0.62~0.67	1.8	

Prepared by K. Fujii Issue date | Oct 27, 1997

JST

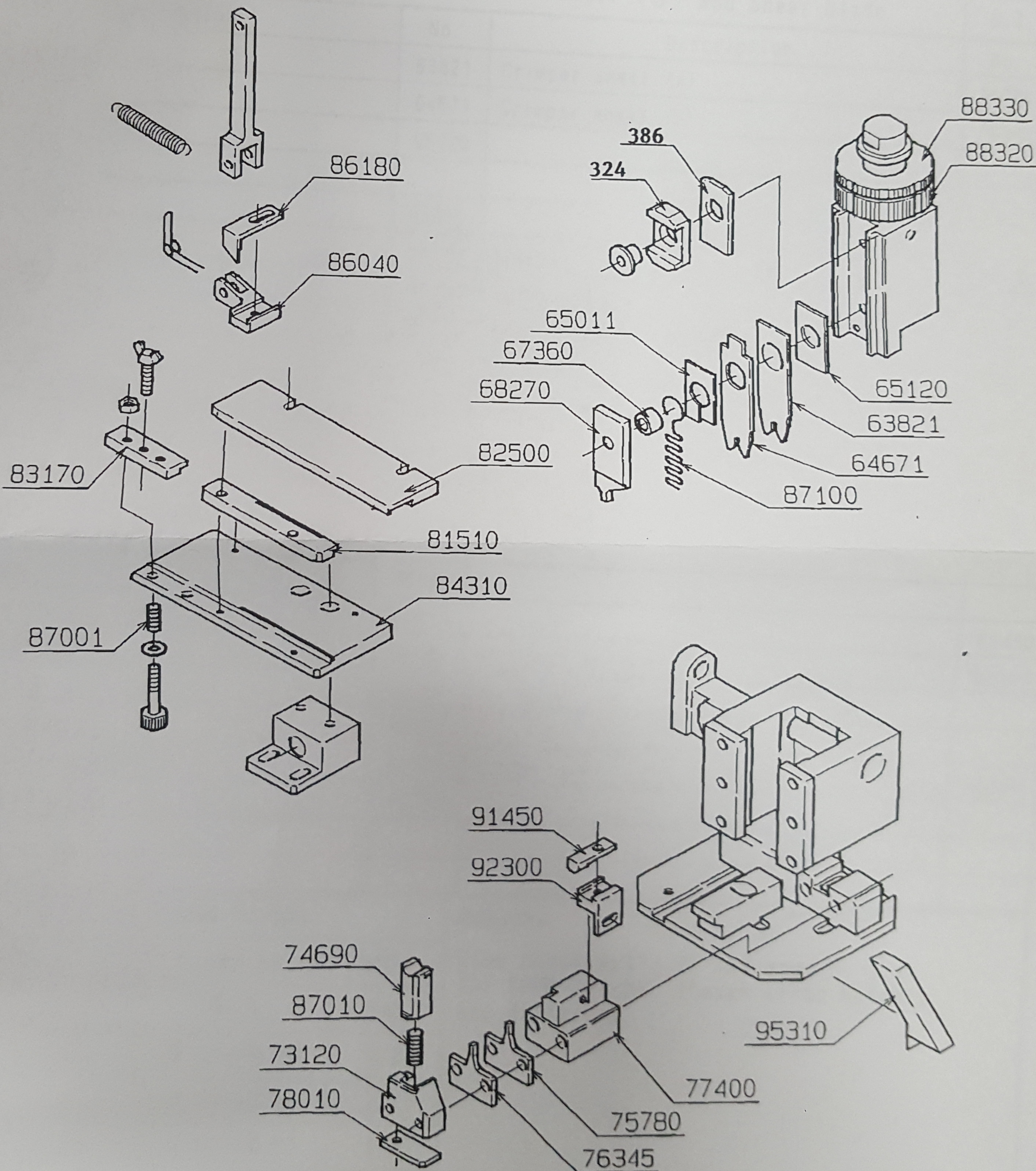
MKS-L-10

Die Set Assembly

Applicable
terminal/
contact

SPHD-001-05

SPHD-002-05



Date	Drawn by
10/3/73	J. C. [unclear]

(CP-MS140)
(CP-MS142)