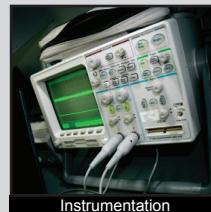


# PB400 SERIES PUSHBUTTON SWITCH

ANTI-VANDAL SWITCHES  
 DETECTOR SWITCHES  
 DIP SWITCHES  
 KEYLOCK SWITCHES  
 NAVIGATION SWITCHES  
**PUSHBUTTON SWITCHES**  
 ROCKER SWITCHES  
 ROTARY SWITCHES  
 SLIDE SWITCHES  
 SNAP ACTION SWITCHES  
 TACTILE SWITCHES  
 TOGGLE SWITCHES  
 CAP OPTIONS



## APPLICATIONS / MARKETS



**RoHS**

## SPECIFICATIONS

**Electrical Rating:** 3A @ 30 VDC  
**Electrical Life:** 6,000 Cycles  
**Contact Resistance:** 30mΩ Max. Initial  
**Insulation Resistance:** 500MΩ Min. @ 500VDC  
**Dielectric Strength:** 500VAC for 1 minute  
**Operating Temperature:** -5°C to 60°C  
**Terminal:** Copper, Silver Plated  
**Travel:** Switch to make: 1.8mm  
           Latch: 2.2mm (Latching)  
           Full Actuation: 3.2mm  
**Contact Arrangement:** DPST  
**Actuation Force:** 3N~7N

## FEATURES & BENEFITS

- Low cost
- Right Angle pushbutton switch
- DPST
- Momentary or Latching function
- 3.2mm travel
- Optional black cap

## PART NUMBER CONFIGURATOR

Series



PB400

Mechanical Configuration



EE - Latching  
 OA - Momentary

Contact Material



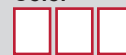
Q - Silver

Cap



X - No Cap  
 R1 - Cap (8.8mm)

Cap Color



BLK - Black

Specifications subject to change without notice 12.19.2017



**E-SWITCH®**

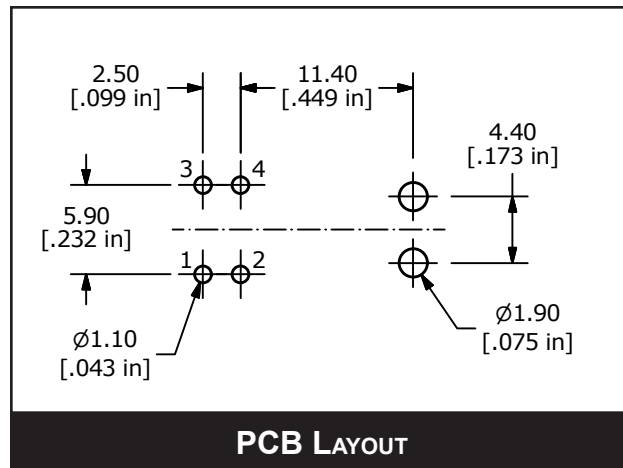
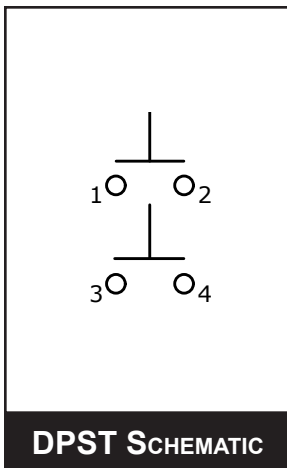
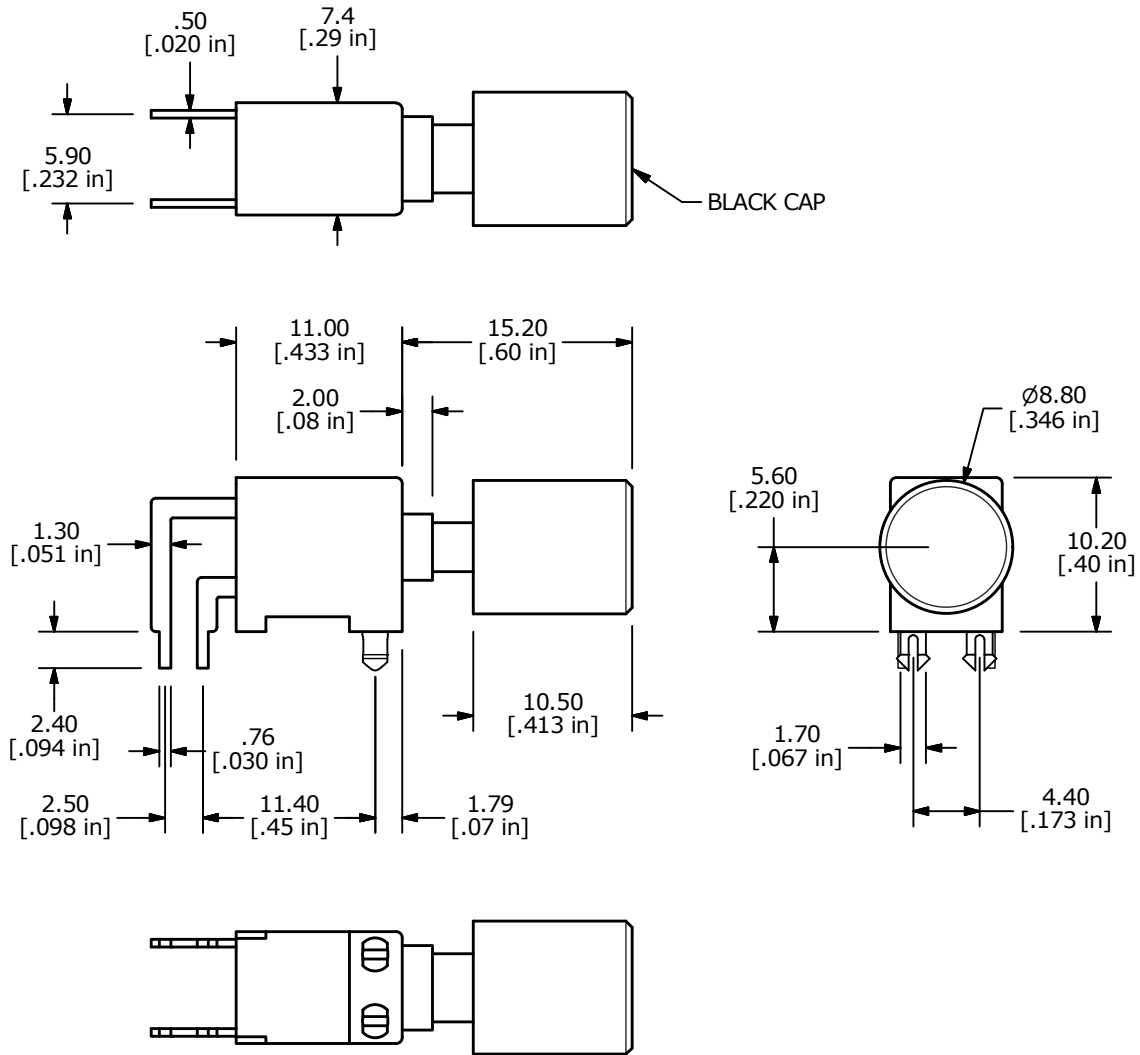
www.e-switch.com

800.867.2717

1

# PB400 SERIES PUSHBUTTON SWITCH

## BODY DIMENSIONS - WITH CAP



# PB400 SERIES PUSHBUTTON SWITCH

## BODY DIMENSIONS - WITHOUT CAP

