

# D-SUB STANDARD

Solder cup – Precision machined contacts – For wire size AWG 20

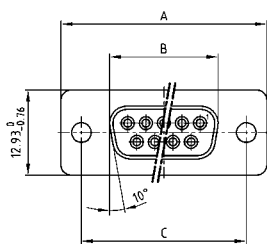


RoHS compliant – CSA listed, File No.: LR 115000-1 – UL listed, File No.: E202784

## DESCRIPTION

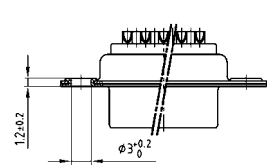
- Suitable for wire size **AWG 20**
- Mounting styles:
  - with through-hole,  $\varnothing .118'' / 3 \text{ mm}$
  - with M3 or 4-40 UNC threaded insert
- Quality class 3 (also available in quality class 1)
- Shell: Steel tin plated (brass tin plated or stainless steel available on request)

## SOCKET CONNECTOR

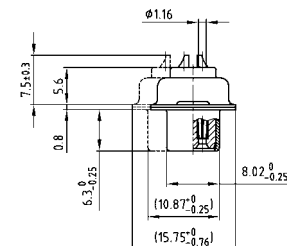


No. of pos.	A -0.76	B -0.25	C
09	31.19	16.46	25.00 +0.12
15	39.52	24.79	33.30 +0.15 / -0.10
25	53.42	38.50	47.04 +0.13
37	69.70	54.96	63.50 +0.13
50	67.31	52.55	61.10 +0.14 / -0.11

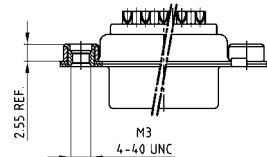
Mounting style: Through-hole



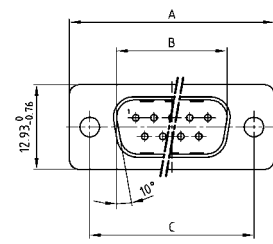
Mounting style: Threaded insert



50 pos. = Dim. in ( \_ )

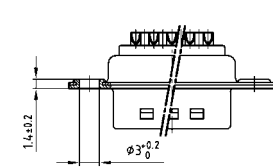


## PLUG CONNECTOR

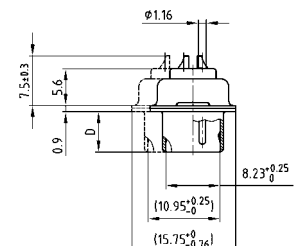


No. of pos.	A -0.76	B -0.25	C	D -0.3
09	31.19	16.79	25.00 +0.12	6.12
15	39.52	25.12	33.30 +0.15 / -0.10	6.12
25	53.42	38.84	47.04 +0.13	5.99
37	69.70	55.30	63.50 +0.13	5.99
50	67.31	52.68	61.10 +0.14 / -0.11	5.99

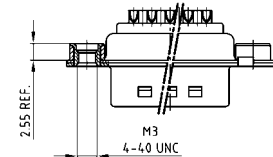
Mounting style: Through-hole



Mounting style: Threaded insert



50 pos. = Dim. in ( \_ )



## ORDER DATA

SOCKET CONNECTOR		
No. of pos.	Mounting style	Part Number
09	Through-hole	164 A 10019 X
15	Through-hole	164 A 10029 X
25	Through-hole	164 A 10039 X
37	Through-hole	164 A 10049 X
50	Through-hole	164 A 10059 X
09	4-40 UNC Threaded insert	164 A 10219 X
15	4-40 UNC Threaded insert	164 A 10229 X
25	4-40 UNC Threaded insert	164 A 10239 X
37	4-40 UNC Threaded insert	164 A 10249 X
50	4-40 UNC Threaded insert	164 A 10259 X
09	M3 Threaded insert	164 A 10269 X
15	M3 Threaded insert	164 A 10279 X
25	M3 Threaded insert	164 A 10289 X
37	M3 Threaded insert	164 A 10299 X
50	M3 Threaded insert	164 A 10309 X

PLUG CONNECTOR		
No. of pos.	Mounting style	Part Number
09	Through-hole	163 A 11069 X
15	Through-hole	163 A 11079 X
25	Through-hole	163 A 11089 X
37	Through-hole	163 A 11099 X
50	Through-hole	163 A 11109 X
09	4-40 UNC Threaded insert	163 A 11269 X
15	4-40 UNC Threaded insert	163 A 11279 X
25	4-40 UNC Threaded insert	163 A 11289 X
37	4-40 UNC Threaded insert	163 A 11299 X
50	4-40 UNC Threaded insert	163 A 11309 X
09	M3 Threaded insert	163 A 11319 X
15	M3 Threaded insert	163 A 11329 X
25	M3 Threaded insert	163 A 11339 X
37	M3 Threaded insert	163 A 11349 X
50	M3 Threaded insert	163 A 11359 X