

# D-SUB STANDARD – IP67 SOLID BODY

Solder pin – Straight – Precision machined contacts

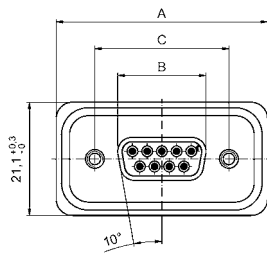


RoHS compliant

## DESCRIPTION

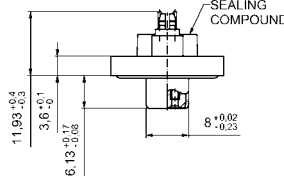
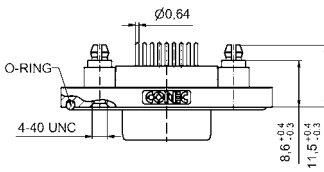
- Mounting style:  
4-40 UNC threaded rear spacer with PCB clip including hex locking bolt
- Quality class 3 (also available in quality class 1)
- One-piece zinc die-cast nickel plated shell
- IP67 for harsh environments, pressure-proof up to 1.45 PSI
- Higher protection on request

## SOCKET CONNECTOR

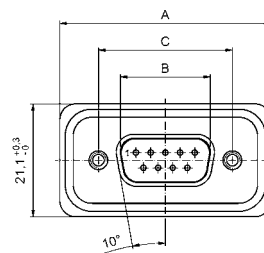


No. of pos.	A +0.2	B -0.2	C
09	39.40	16.46	25.00 <sup>+0.12</sup> / <sub>-0.13</sub>
15	47.70	24.79	33.32 <sup>+0.12</sup> / <sub>-0.12</sub>
25	61.40	38.50	47.04 <sup>+0.13</sup> / <sub>-0.13</sub>
37	78.00	54.96	63.50 <sup>+0.13</sup> / <sub>-0.13</sub>

PCB layout Kat1kFUA

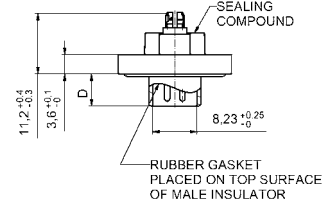
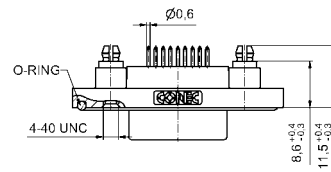


## PLUG CONNECTOR



No. of pos.	A +0.2	B -0.2	C	D
09	39.40	16.81	25.00 <sup>+0.12</sup> / <sub>-0.13</sub>	6.00 <sup>+0.12</sup> / <sub>-0.18</sub>
15	47.70	25.14	33.32 <sup>+0.12</sup> / <sub>-0.12</sub>	6.00 <sup>+0.12</sup> / <sub>-0.18</sub>
25	61.40	38.86	47.04 <sup>+0.13</sup> / <sub>-0.13</sub>	5.99 <sup>+0.13</sup> / <sub>-0.3</sub>
37	78.00	55.32	63.50 <sup>+0.13</sup> / <sub>-0.13</sub>	5.99 <sup>+0.13</sup> / <sub>-0.3</sub>

PCB layout Kat1kFUA



## ORDER DATA

SOCKET CONNECTOR		
No. of pos.	Mounting style 4-40 UNC	Part Number
09	Threaded rear spacer PCB clip	15-000453
15	Threaded rear spacer PCB clip	15-000463
25	Threaded rear spacer PCB clip	15-000473
37	Threaded rear spacer PCB clip	15-000483

PLUG CONNECTOR		
No. of pos.	Mounting style 4-40 UNC	Part Number
09	Threaded rear spacer PCB clip	15-000413
15	Threaded rear spacer PCB clip	15-000423
25	Threaded rear spacer PCB clip	15-000433
37	Threaded rear spacer PCB clip	15-000443

PCB clip .122"/3.1 ± .004"/0.10 mm hole diameter and .063"/1.6 mm circuit board thickness